

TEC-8A-24V-PID-HC

Operating Manual



Contact and Shipping:
Tomorrow's System Sp. Z o.o.

Okulickiego 7/9 hala G39
05-500 Piaseczno
Poland
tel.: +48 515 180 752

Company Information:
Tomorrow's System Sp. Z o.o.

Pułaskiego 125/35
15-337 Białystok
Poland
NIP: PL5423238556

Table of content

Product Description..... 3

Technical Data 4

Electrical Wiring..... 4

Advanced Program 6

Basic Program 8

Recommendations and Requirements 9

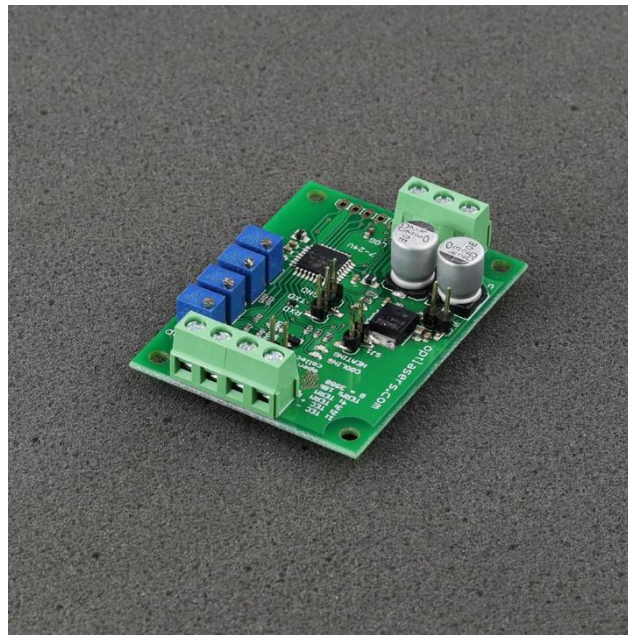
Protection..... 9

Related Products 10

Product Description

TEC-8A-24V-PID-HC is improved digital temperature controller. Latest version can heat and cool without changing any jumpers. The controller is available in two versions of the program: Basic and Advanced. Beyond the basic functionality, Advanced version offers possibility to set various parameters of the controller using UART.

It has also open collector output which allows to use it as a signal for other devices. The indication LED show heating or cooling activity. Also, the dimensions of the PCB are smaller and mounting holes were added.



You can use UART to read the temperature setpoint, actual temperature and PID parameters values. To this end, just use the GND, TXD and RXD outputs. To read the proper value of the temperature you must use a thermistor with BETA value of 3950 which is also included with the driver.

Its small size, simplicity of regulation and versatility make it widely used in many areas. It is dedicated to work with 12 V thermocouples (Peltier modules) yet it does well with all modules whose supply voltage falls in the range of 5 to 24 V.

With the use of four trimmers, the temperature setpoint as well as values of the PID controller parameters can be set. The controller operates in PWM mode (Pulse Width Modulation) and can control currents of up to 8 A. For the temperature sensor, it uses a standard 10k NTC thermistor. By default, the temperature setpoint is set to 20 degrees Celsius.

Due to the possibility to set the parameters of a PID controller, the driver can be adapted to almost any system. Depending on the inertia of the system, properly

adjusted driver is able to maintain the desired temperature with an accuracy of up to $\pm 0.05^{\circ}\text{C}$.

The current flowing through the Peltier cell depends on the supply voltage used. Most of the common modules should be supplied with the voltage of 5 to 24V, and the maximum current that flows through them is defined by a cell symbol.

The driver is working in TTL 5V standard and will not work correctly in TTL 3,3V standard.

Technical Data

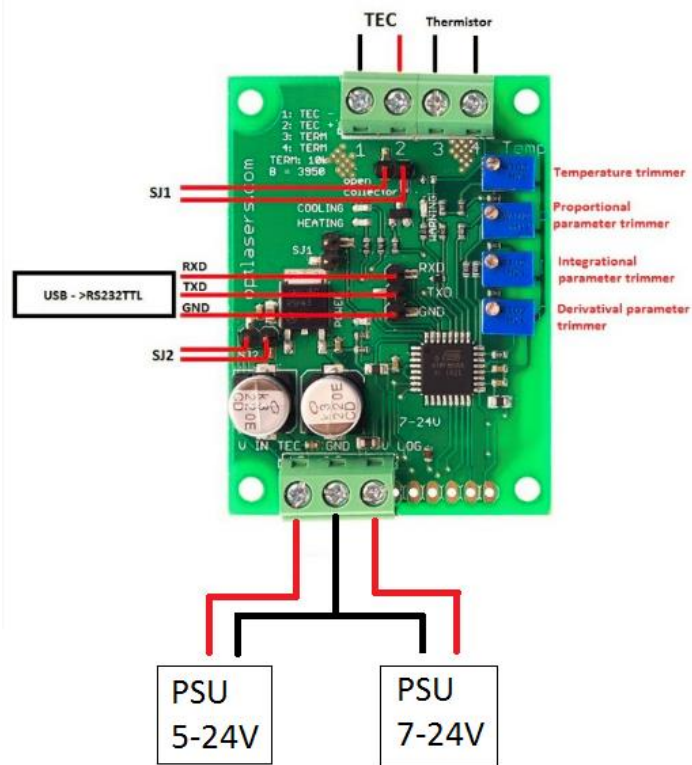
TEC maximum continuous current	8 A
Input Voltage (V LOG)	7 - 24 V
Input Voltage (V TEC)	5 - 24 V
Temperature stabilization accuracy	$\pm 0.1^{\circ}\text{C}$
Cooling or heating work	Yes
Temperature sensor	10k NTC B=3950
Temperature range to set with trimmer	0 - 50°C
Heating indicator	Yellow LED
Cooling indicator	Blue LED
Power supply indicator	Green LED
Lack of thermistor connection indicator	Red LED
Power supply indicator	Yes - LED
Over 55 degrees Celsius indicator*	Yes - Warning LED
Heat sink required	No
Dimensions	45 x 60 mm
Mounting holes	37 x 52 mm
Mounting holes diameter	3.2 mm

*Set by default. Can be changed in advanced version of the program.

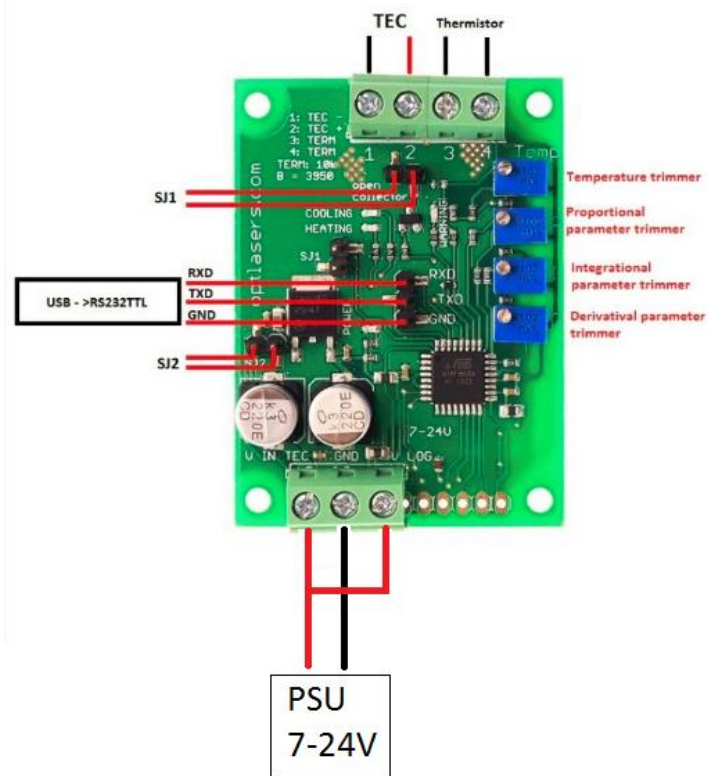
Electrical Wiring

The TEC-8A-24V-PID-HC driver can be connected in three different ways.

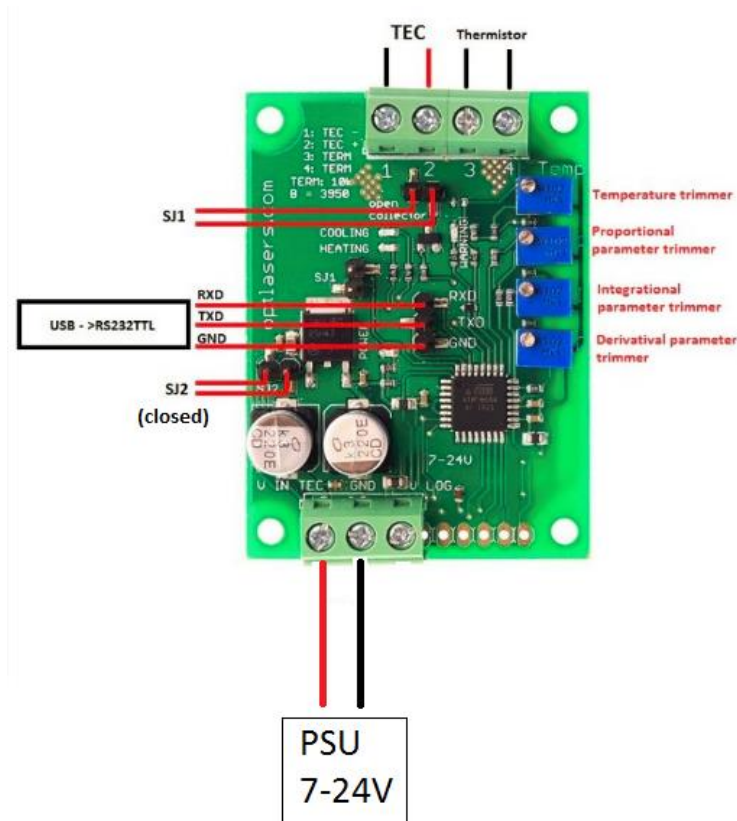
1. Using two PSU:



2. Using one PSU:



3. Using one PSU with **closed SJ2**:



It is possible to connect Peltier device (TEC) in two ways. By connecting the positive wire of the TEC device to "TEC +" terminal and negative wire of the TEC device to "TEC - " terminal it will work in cooling mode. If the TEC electrical connection is reversed device will work in heating mode.

Advanced Program

Opened/Not connected SJ1 jumper mode

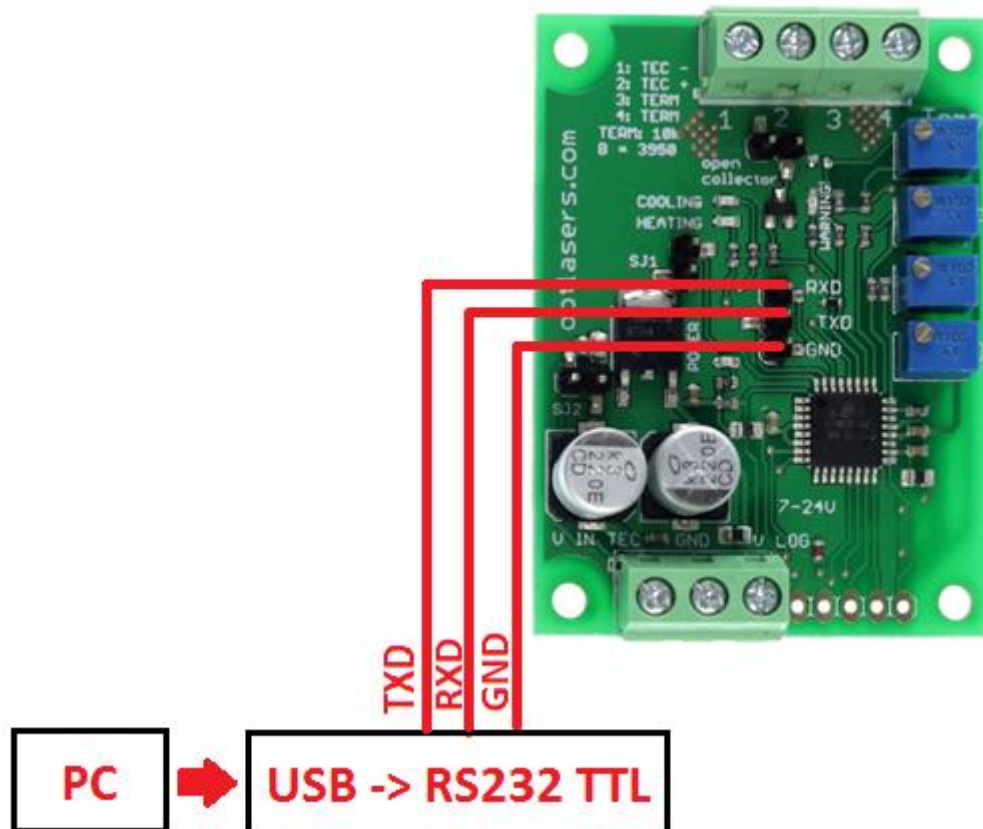
- Adjustment with the use of four trimmers. Trimmers allow to set PID parameters, as well as to set the temperature working point;
- Work in the temperature setpoint range of 0 to 50 degrees Celsius;
- Warning diode blinking in the range of 45 to 70 degrees Celsius;
- Grounded open collector (OC), warning diode ON and Peltier current OFF, over 70 degrees Celsius;
- When temperature drops from 70 degrees the driver goes back to normal work.

Closed/Connected SJ1 jumper mode

- Adjustment with use of UART port

Using PC and USB->RS232 TTL it is possible to send and read parameters to/from the regulator. While using this mode, trimmers are not working, but user gets full control of any of the parameters. Additionally, it is possible to set lower/upper threshold which is checked by the driver (OC).

Connection:



- TXD should be connected to RXD
- RXD should be connected to TXD
- GND should be connected to GND

Connection parameters:

- 38400 bits / second
- 8 data bit
- even parity: no
- stop bits: 1
- flow control: no

Parameters:

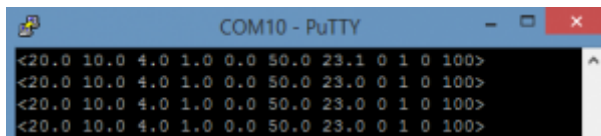
T_{setpoint} - temperature set by the user
P - proportional parameter 0.0 - 20.0

I - integral parameter 0.0 - 20.0
 D - derivative parameter 0.0 - 20.0
 T_{min} - lower threshold which is checking by the driver (OC)
 T_{max} - upper threshold which is checked by the driver (OC)
 $T_{measured}$ - currently measured temperature
 Cooling - 0 or 1 showing the status of the controller
 Heating - 0 or 1 showing the status of the controller
 OC - 0 or 1 status of the open collector
 PWM - 0 to 100% (duty cycle)

Readout is given as:

< $T_{setpoint}$ PID T_{min} T_{max} $T_{measured}$ Cooling Heating OC PWM% >

Example:



Configuration format: < $T_{setpoint}$ PID T_{min} T_{max} >

Example: <10 4.5 1 30.6 0 60.7>

<> are necessary to make a correct command

Additional commands:

o - take single readout
 R - automatic readout ON
 r - automatic readout OFF
 a - switch OFF TEC supply
 A - switch ON TEC supply

- normal work when the measured temperature is in the range of T_{min} and T_{max} , when out of range the OC is grounded and warning led is ON, Peltier module is working normally (cooling or heating);

- when the measured temperature goes back to T_{min} , T_{max} range, OC become disconnected and warning diode is OFF.

Basic Program

- Adjustment with the use of four trimmers. Trimmers allow to set PID parameters, as well as to set the temperature working point;

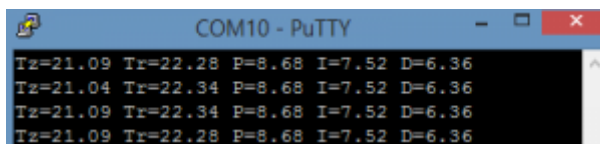
- Work in the temperature setpoint range of 0 to 50 degrees Celsius;

- Warning diode blinking in the range of 45 to 70 degrees Celsius;

- While using Basic program SJ1 is not working;
- Grounded open collector (OC), warning diode ON and Peltier current OFF, over 70 degrees Celsius;
- When temperature drops from 70 degrees, the driver goes back to normal work;
- The parameters set with UART

Tz - Temperature setpoint
 Tr - Temperature measured
 P - proportional parameter 0.0 - 20.0
 I - integral parameter 0.0 - 20.0
 D - derivative parameter 0.0 - 20.0

Example:



Recommendations and Requirements

We recommend the use of power cables with a minimum cross-section of 0.5mm².

TEC-8A-24V-PID-HC uses serial port (COM) to communicate with PC. There are a lot of desktop applications which can be used to read out data, sending from the controller and to write in parameters (RS232 Programmable version). Below, there are only a few examples:

- RealTerm (Windows)
- Minicom (Linux)
- PuTTY

If you are able to program, you can also write your own application. There are a lot of libraries for serial communication in any programming language.

Protection

The system detects a lack of connection with the thermistor and then switches WARNING LED on. As long as the connection is lost, the driver will not take any action and the open collector output is grounded.

If the temperature is higher than 45 degrees Celsius, WARNING LED starts to blink but the driver is working normally.

If the temperature is higher than 70 degrees Celsius, WARNING LED is ON and the driver will not power the Peltier module. Also, the open collector output is grounded.

Related products

- [TEC-8A-24V-PID-HC-RS232 Programmable Temperature Controller -100 +100°C](#)
- [TEC-8A-24V-PID-HC-RS232 Programmable Temperature Controller](#)
- [TEC-8A-24V-PID-HC Temperature Controller](#)